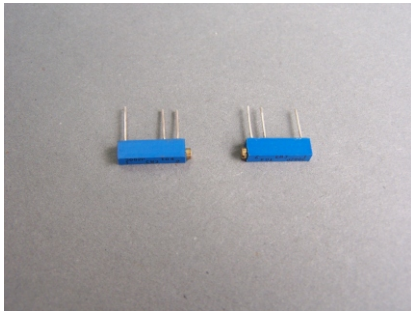


# WIW3082 Trimmer Potentiometer



## Features

- 1-1/2 inch Rectangular / Multiturn
- Cermet / Industrial / Sealed

## Electrical Characteristics

Standard Resistance Range  
100 to 2 Mmegohms  
(see standard resistance table)  
Resistance Tolerance  
±5% std.  
(tighter tolerance is available)  
Absolute Minimum Resistance  
1% or 2 ohms max.  
(whichever is greater)  
Contact Resistance Variation  
2% or 10 ohms max.  
(whichever is greater)  
Resolution  
Infinite  
Insulation Resistance  
600 Vdc  
1,000 megohms min.  
Dielectric Strength  
101.3 kPa 600 Vac  
8.5 kPa 300 Vac  
Effective Travel: 12 turns

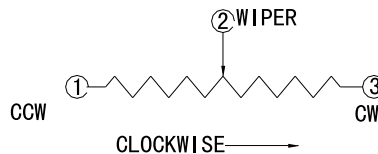
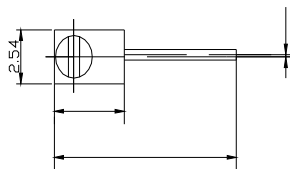
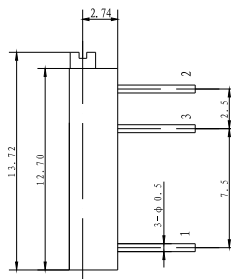
## Environmental Characteristics

Power Rating (315 volts max.)  
0.5 watt (70°C), 0 watt (125°C)  
Temperature Range  
-55°C to +125°C  
Temperature Coefficient  
±100ppm/°C  
Shock  
GJB360A-96, Method 213, condition I  
(2% Δ TR; 2% Δ VR)  
Random Vibration  
GJB360A-96, Method 214,  
Condition I (D)  
(2% Δ TR; 2% Δ VR)  
Rotational Life  
200 cycles  
(2% Δ TR)

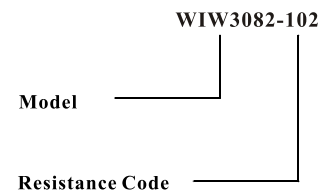
## Physical Characteristics

Torque  
20 mN • m max.

## WIW3082 Dimension



## How to order



## Standard Resistance Table

Resistance (Ohms)	Resistance Code
100	101
200	201
500	501
1,000	102
2,000	202
5,000	502
10,000	103
20,000	203
25,000	253
50,000	503
100,000	104
200,000	204
250,000	254
500,000	504
1,000,000	105
2,000,000	205

Special resistance is available

Detail Specification: Q/R Y20020-2000